

For this week's spellings...

we are looking at words with the prefix 'il' or 'ir', which means 'not' or 'into'.

irrelevant



illegal



illegible



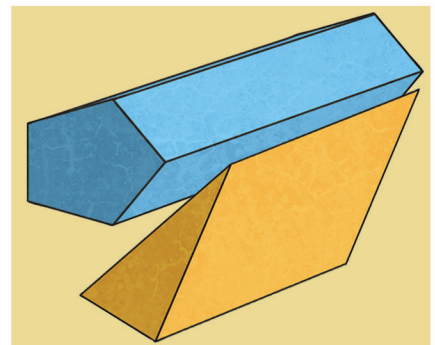
illogical



illiterate



illicit



irregular



irresistible



irresponsible



irrational

Look, Say, Cover, Write and Check!

Tick the columns as you follow the instructions from left to right. Make sure you spell the words in the 'write' column. If you spell the word incorrectly, write it again in the 'correction' column.

	Look	Say	Cover	Write	Check	Correction
illegal						
illegible						
illogical						
illiterate						
illicit						
irregular						
irrelevant						
irresponsible						
irrational						
irresistible						

Prefix Word: Dictionary Match-Up

This week we are learning to spell prefix words that begin with ir- or -il. Can you match the correct prefix word with the correct definition? Use a dictionary if you need to.

illegal	illegible	illogical	illiterate	illicit
irregular	irrelevant	irresponsible	irrational	irresistible

1. _____ (adjective): Not making any sense.
2. _____ (adjective): Unable to read or write.
3. _____ (adjective): Looked upon as being wrong.
4. _____ (adjective): Not even in its shape.
5. _____ (adjective): Too tempting to say no to.
6. _____ (adjective): Not behaving reasonably.
7. _____ (adjective): Not clear enough to be read.
8. _____ (adjective): Behaving recklessly or foolishly.
9. _____ (adjective): Not connected with anything important.

Challenge Task

One word hasn't been used. Can you write your own definition for it?

Prefix Word: Dictionary Match-Up Answers

This week we are learning to spell prefix words that begin with ir- or -il. Can you match the correct prefix word with the correct definition? Use a dictionary if you need to.

illegal	illegible	illogical	illiterate	illicit
irregular	irrelevant	irresponsible	irrational	irresistible

1. ***illogical*** (adjective): Not making any sense.
2. ***illiterate*** (adjective): Unable to read or write.
3. ***illicit*** (adjective): Looked upon as being wrong.
4. ***irregular*** (adjective): Not even in its shape.
5. ***irresistible*** (adjective): Too tempting to say no to.
6. ***irrational*** (adjective): Not behaving reasonably.
7. ***illegible*** (adjective): Not clear enough to be read.
8. ***irresponsible*** (adjective): Behaving recklessly or foolishly.
9. ***irrelevant*** (adjective): Not connected with anything important.

Challenge Task

One word hasn't been used. Can you write your own definition for it?

illegal (adjective): *Forbidden by law.*

<p>Week 4</p> <p>Adding the prefix il- (before a root word starting with 'l') and the prefix ir (before a root word starting with 'r')</p>	<p>Week 4</p> <p>Adding the prefix il- (before a root word starting with 'l') and the prefix ir (before a root word starting with 'r')</p>	<p>Week 4</p> <p>Adding the prefix il- (before a root word starting with 'l') and the prefix ir (before a root word starting with 'r')</p>	<p>Week 4</p> <p>Adding the prefix il- (before a root word starting with 'l') and the prefix ir (before a root word starting with 'r')</p>	<p>Week 4</p> <p>Adding the prefix il- (before a root word starting with 'l') and the prefix ir (before a root word starting with 'r')</p>
<p>illegal</p> <p>illegible</p> <p>illogical</p> <p>illiterate</p> <p>illicit</p> <p>irregular</p> <p>irrelevant</p> <p>irresponsible</p> <p>irrational</p> <p>irresistible</p>	<p>illegal</p> <p>illegible</p> <p>illogical</p> <p>illiterate</p> <p>illicit</p> <p>irregular</p> <p>irrelevant</p> <p>irresponsible</p> <p>irrational</p> <p>irresistible</p>	<p>illegal</p> <p>illegible</p> <p>illogical</p> <p>illiterate</p> <p>illicit</p> <p>irregular</p> <p>irrelevant</p> <p>irresponsible</p> <p>irrational</p> <p>irresistible</p>	<p>illegal</p> <p>illegible</p> <p>illogical</p> <p>illiterate</p> <p>illicit</p> <p>irregular</p> <p>irrelevant</p> <p>irresponsible</p> <p>irrational</p> <p>irresistible</p>	<p>illegal</p> <p>illegible</p> <p>illogical</p> <p>illiterate</p> <p>illicit</p> <p>irregular</p> <p>irrelevant</p> <p>irresponsible</p> <p>irrational</p> <p>irresistible</p>
<p>Week 4</p> <p>Adding the prefix il- (before a root word starting with 'l') and the prefix ir (before a root word starting with 'r')</p>	<p>Week 4</p> <p>Adding the prefix il- (before a root word starting with 'l') and the prefix ir (before a root word starting with 'r')</p>	<p>Week 4</p> <p>Adding the prefix il- (before a root word starting with 'l') and the prefix ir (before a root word starting with 'r')</p>	<p>Week 4</p> <p>Adding the prefix il- (before a root word starting with 'l') and the prefix ir (before a root word starting with 'r')</p>	<p>Week 4</p> <p>Adding the prefix il- (before a root word starting with 'l') and the prefix ir (before a root word starting with 'r')</p>
<p>illegal</p> <p>illegible</p> <p>illogical</p> <p>illiterate</p> <p>illicit</p> <p>irregular</p> <p>irrelevant</p> <p>irresponsible</p> <p>irrational</p> <p>irresistible</p>	<p>illegal</p> <p>illegible</p> <p>illogical</p> <p>illiterate</p> <p>illicit</p> <p>irregular</p> <p>irrelevant</p> <p>irresponsible</p> <p>irrational</p> <p>irresistible</p>	<p>illegal</p> <p>illegible</p> <p>illogical</p> <p>illiterate</p> <p>illicit</p> <p>irregular</p> <p>irrelevant</p> <p>irresponsible</p> <p>irrational</p> <p>irresistible</p>	<p>illegal</p> <p>illegible</p> <p>illogical</p> <p>illiterate</p> <p>illicit</p> <p>irregular</p> <p>irrelevant</p> <p>irresponsible</p> <p>irrational</p> <p>irresistible</p>	<p>illegal</p> <p>illegible</p> <p>illogical</p> <p>illiterate</p> <p>illicit</p> <p>irregular</p> <p>irrelevant</p> <p>irresponsible</p> <p>irrational</p> <p>irresistible</p>

<p>Week 4 Adding the prefix il- (before a root word starting with 'l') and the prefix ir- (before a root word starting with 'r')</p>	<p>Week 4 Adding the prefix il- (before a root word starting with 'l') and the prefix ir- (before a root word starting with 'r')</p>	<p>Week 4 Adding the prefix il- (before a root word starting with 'l') and the prefix ir- (before a root word starting with 'r')</p>	<p>Week 4 Adding the prefix il- (before a root word starting with 'l') and the prefix ir- (before a root word starting with 'r')</p>	<p>Week 4 Adding the prefix il- (before a root word starting with 'l') and the prefix ir- (before a root word starting with 'r')</p>
<p>illegal</p> <p>illegible</p> <p>illogical</p> <p>illiterate</p> <p>illicit</p> <p>irregular</p> <p>irrelevant</p> <p>irresponsible</p> <p>irrational</p> <p>irresistible</p>	<p>illegal</p> <p>illegible</p> <p>illogical</p> <p>illiterate</p> <p>illicit</p> <p>irregular</p> <p>irrelevant</p> <p>irresponsible</p> <p>irrational</p> <p>irresistible</p>	<p>illegal</p> <p>illegible</p> <p>illogical</p> <p>illiterate</p> <p>illicit</p> <p>irregular</p> <p>irrelevant</p> <p>irresponsible</p> <p>irrational</p> <p>irresistible</p>	<p>illegal</p> <p>illegible</p> <p>illogical</p> <p>illiterate</p> <p>illicit</p> <p>irregular</p> <p>irrelevant</p> <p>irresponsible</p> <p>irrational</p> <p>irresistible</p>	<p>illegal</p> <p>illegible</p> <p>illogical</p> <p>illiterate</p> <p>illicit</p> <p>irregular</p> <p>irrelevant</p> <p>irresponsible</p> <p>irrational</p> <p>irresistible</p>
<p>Week 4 Adding the prefix il- (before a root word starting with 'l') and the prefix ir- (before a root word starting with 'r')</p>	<p>Week 4 Adding the prefix il- (before a root word starting with 'l') and the prefix ir- (before a root word starting with 'r')</p>	<p>Week 4 Adding the prefix il- (before a root word starting with 'l') and the prefix ir- (before a root word starting with 'r')</p>	<p>Week 4 Adding the prefix il- (before a root word starting with 'l') and the prefix ir- (before a root word starting with 'r')</p>	<p>Week 4 Adding the prefix il- (before a root word starting with 'l') and the prefix ir- (before a root word starting with 'r')</p>
<p>illegal</p> <p>illegible</p> <p>illogical</p> <p>illiterate</p> <p>illicit</p> <p>irregular</p> <p>irrelevant</p> <p>irresponsible</p> <p>irrational</p> <p>irresistible</p>	<p>illegal</p> <p>illegible</p> <p>illogical</p> <p>illiterate</p> <p>illicit</p> <p>irregular</p> <p>irrelevant</p> <p>irresponsible</p> <p>irrational</p> <p>irresistible</p>	<p>illegal</p> <p>illegible</p> <p>illogical</p> <p>illiterate</p> <p>illicit</p> <p>irregular</p> <p>irrelevant</p> <p>irresponsible</p> <p>irrational</p> <p>irresistible</p>	<p>illegal</p> <p>illegible</p> <p>illogical</p> <p>illiterate</p> <p>illicit</p> <p>irregular</p> <p>irrelevant</p> <p>irresponsible</p> <p>irrational</p> <p>irresistible</p>	<p>illegal</p> <p>illegible</p> <p>illogical</p> <p>illiterate</p> <p>illicit</p> <p>irregular</p> <p>irrelevant</p> <p>irresponsible</p> <p>irrational</p> <p>irresistible</p>

Adding the prefix il- (before a root word starting with 'l') and the prefix ir- (before a root word starting with 'r')

i r r e s p o n s i b l e
i r r a t i o n a l c d i
r h i l l e g i b l e k r
r y m i a h y f i f i i r
e l l l g i c a l i u r e
s q l l y j b g l l r r g
i b c o p g f o i l j e u
s r r g s i s s t i b l l
t a m i t h z n e c o e a
i a y c g s q c r i b v r
b m s a x m y t a t a a o
l i l l e g a l t n h n p
e y y b i t n m e m v t y

illegal
illegible
illogical
illiterate
illicit
irregular
irrelevant
irresponsible
irrational
irresistible

Adding the prefix il- (before a root word starting with 'l') and the prefix ir- (before a root word starting with 'r')

i r r e s p o n s i b l e
i r r a t i o n a l c d i
r h i l l e g i b l e k r
r y m i a h y f i f i i r
e l l l g i c a l i u r e
s q l l y j b g l l r r g
i b c o p g f o i l j e u
s r r g s i s s t i b l l
t a m i t h z n e c o e a
i a y c g s q c r i b v r
b m s a x m y t a t a a o
l i l l e g a l t n h n p
e y y b i t n m e m v t y

illegal
illegible
illogical
illiterate
illicit

irregular
irrelevant
irresponsible
irrational
irresistible

Adding the prefix il- (before a root word starting with 'l') and the prefix ir- (before a root word starting with 'r')

i r r e s p o n s i b l e
i r r a t i o n a l c d i
r h i l l e g i b l e k r
r y m i a h y f i f i i r
e l l l g i c a l i u r e
s q l l y j b g l l r r g
i b c o p g f o i l j e u
s r r g s i s s t i b l l
t a m i t h z n e c o e a
i a y c g s q c r i b v r
b m s a x m y t a t a a o
l i l l e g a l t n h n p
e y y b i t n m e m v t y

illegal
illegible
illogical
illiterate
illicit

irregular
irrelevant
irresponsible
irrational
irresistible

Adding the prefix il- (before a root word starting with 'l') and the prefix ir- (before a root word starting with 'r')

i r r e s p o n s i b l e
i r r a t i o n a l c d i
r h i l l e g i b l e k r
r y m i a h y f i f i i r
e l l l g i c a l i u r e
s q l l y j b g l l r r g
i b c o p g f o i l j e u
s r r g s i s s t i b l l
t a m i t h z n e c o e a
i a y c g s q c r i b v r
b m s a x m y t a t a a o
l i l l e g a l t n h n p
e y y b i t n m e m v t y

illegal
illegible
illogical
illiterate
illicit

irregular
irrelevant
irresponsible
irrational
irresistible

Year 4 Term 1A Overview

Objectives that are in pink are a Y3/Y4 statutory requirement and individual words highlighted pink are from the Y3/Y4 statutory spelling list. The additional sets either: revise previously visited spelling rules from lower year groups; practise a spelling rule linked to a Y3/Y4 statutory spelling word or relate to a word, sentence or punctuation objective from the English Appendix 2 of the NC 2014.

Week 1 Words with /aw/ spelt with augh and au	Week 2 Adding the prefix in- (meaning 'not' or 'into')	Week 3 Adding the prefix in- (before a root word starting with 'm' or 'p')	Week 4 Adding the prefix il- (before a root word starting with 'l') and the prefix ir- (before a root word starting with 'r')	Week 5 Homophones & near homophones	Week 6 Words with /shun/ endings spelt with 'sion' (if root word ends in 'se', 'de' or 'd')	Week 7 Review Week
caught	inactive	immature	illegal	medal	division	Within this assess & review week, use the provided Year 4 Autumn Term 1 Dictation Passages and the Spot the Mistake with Mr Whoops self-correction activities to assess pupil's progress against the objectives that have been covered within this half-term.
naughty	incorrect	immeasurable	illegible	meddle	invasion	
taught	inaccurate	impossible	illogical	missed	confusion	
daughter	insecure	immortal	illiterate	mist	decision	
autumn	indefinite	imperfect	illicit	scene	collision	
clause	incomplete	impatient	irregular	seen	television	
cause	infinite	immovable	irrelevant	board	revision	
astronaut	inedible	impolite	irresponsible	bored	erosion	
applaud	inability	important	irrational	which	inclusion	
author	indecisive	improper	irresistible	witch	explosion	

Prefixes

ir- and il-



REGENT STUDIES

Focused education on life's walk!

www.regentstudies.com

This week, we are going to look at the last prefixes in this set that mean 'not' or 'into'.

We've already looked at words beginning with the prefixes in- and im-, for example:



in-

insecure

inaccurate

incorrect

im-

immortal

impossible

impatient



Today, we're going to look at words that begin with the prefixes ir- or il-. Can you think of any?

Il- prefix	Ir- prefix

Working with a partner, create an il- and ir- prefix table on your whiteboards.

How many can you think of?



What words did you think of? What do they all mean?

Il- prefix	Ir- prefix
illegal	irregular
illegible	irrelevant
illogical	irresponsible
illiterate	irrational
illicit	irresistible

Can you spot a pattern?
Hint: Look at the first
letter of the root word!



Il- prefix	Ir- prefix
illegal	irregular
illegible	irrelevant
illogical	irresponsible
illiterate	irrational
illicit	irresistible

- All the root words that start with the letter **l** have the **il-** prefix.
- All the root words that start with the letter **r** have the **ir-** prefix.

**Let's choose a word together and play 'Spin the Word'!
Work in pairs on your whiteboards. Spin the wheel and
follow the instructions below.**

1 Find any smaller words within the word.

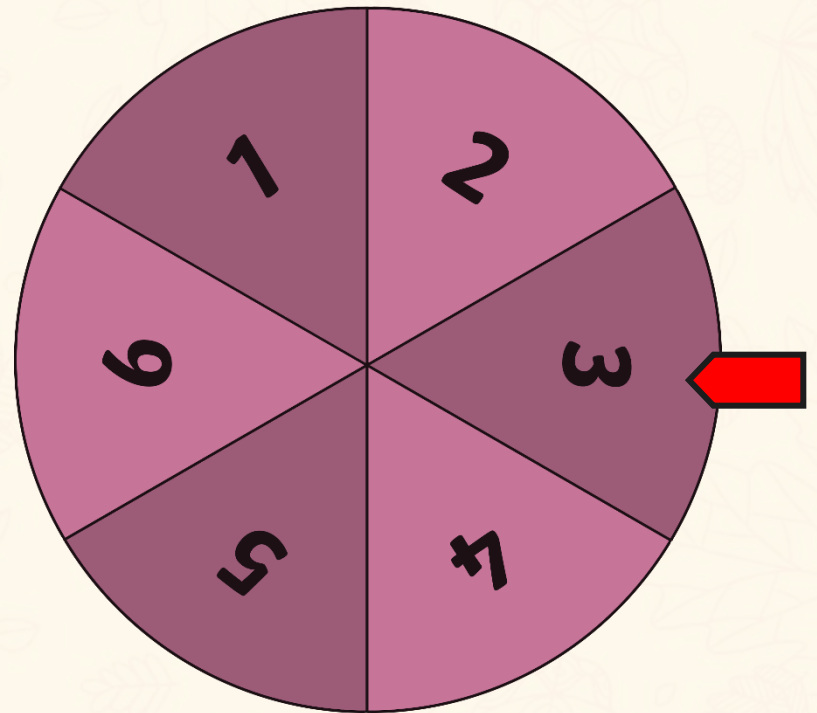
2 Write a synonym for the word.

3 Sky-write the word in the air with your finger.

4 Speed-write the word as many times as you can in a minute.

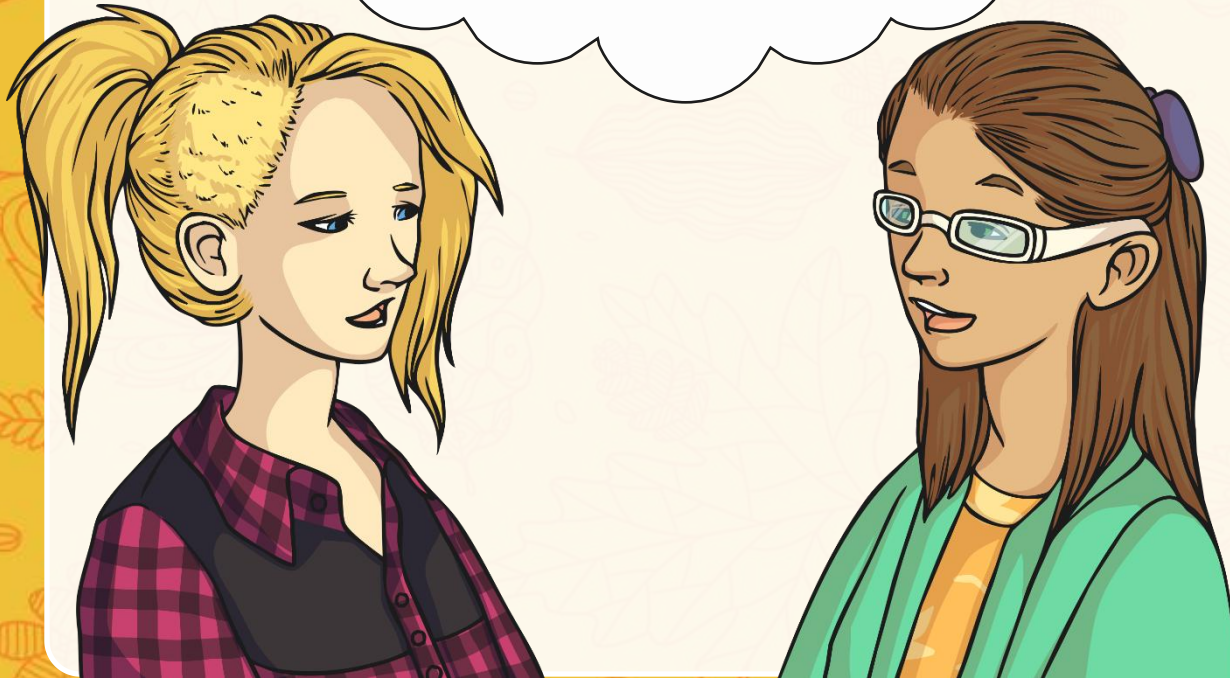
5 Break the word into syllables.

6 Use the word in a sentence.



Here are your spelling words for this week.

Work hard to practise adding the prefix il- and ir- before a root word.



Week 4

Adding the prefix il- (before a root word starting with 'l') and the prefix ir- (before a root word starting with 'r')

illegal

illegible

illogical

illiterate

illicit

irregular

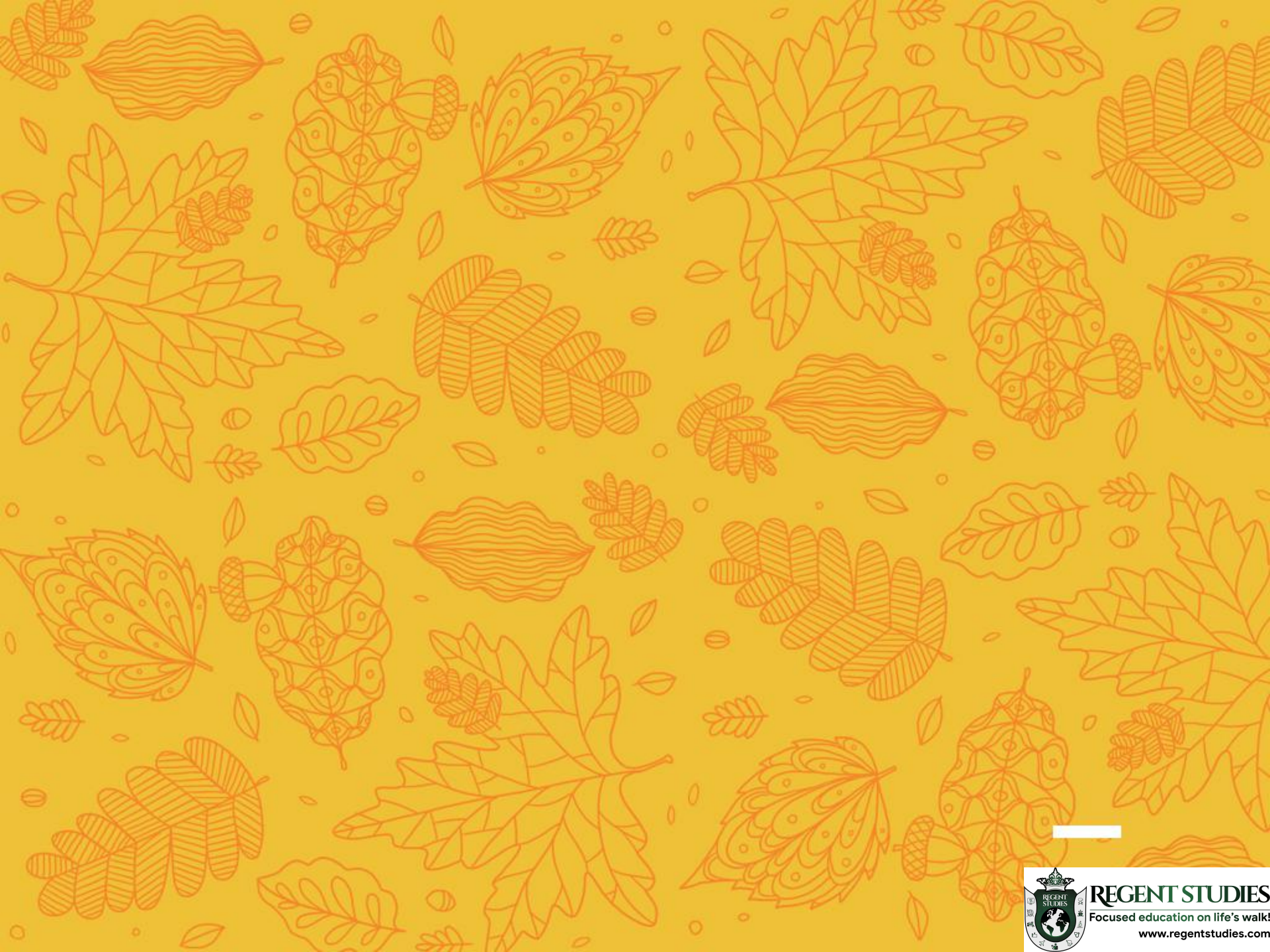
irrelevant

irresponsible

irrational

irresistible





REGENT STUDIES

Focused education on life's walk

www.regentstudies.com